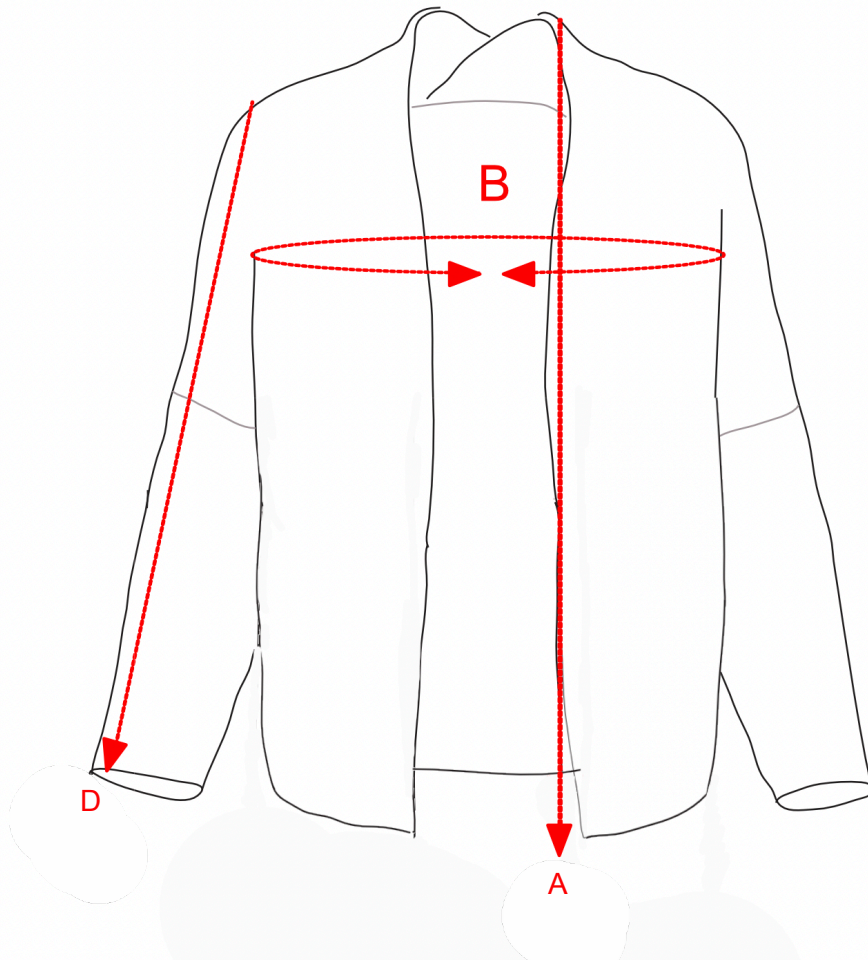




## ROSALIND SIZE CHART FULL LENGTH



These are the measurements for our Rosalind, kimono style jacket.

SIZE			LENGTH ( A )		CHEST ( B )		SLEEVELENGTH (D)	
UK	EURO	US	CM	INCHES	CM	INCHES	CM	INCHES
XS(6)	34	2	56.5	22	62	64	40.5	16
S(8-10)	36-38	4-6	58	23	65	25	40.5	16
M (12-14)	40-42	8-10	60	23.5	71	28	42	16.5
L (16-18)	44-46	12-14	60	23.5	76	30	38.5	15
XL(20-22)	48-50	16-18	60.5	24	78.5	31	38.5	15
2XL(22-24)	50-52	18-20	64	25	79	31	39.5	15.5

Still not sure which size to go for? We're always happy to offer fitting advice. Drop us an email at [hello@palava.co](mailto:hello@palava.co) or give us a call on +44 (0)207 052 3888.