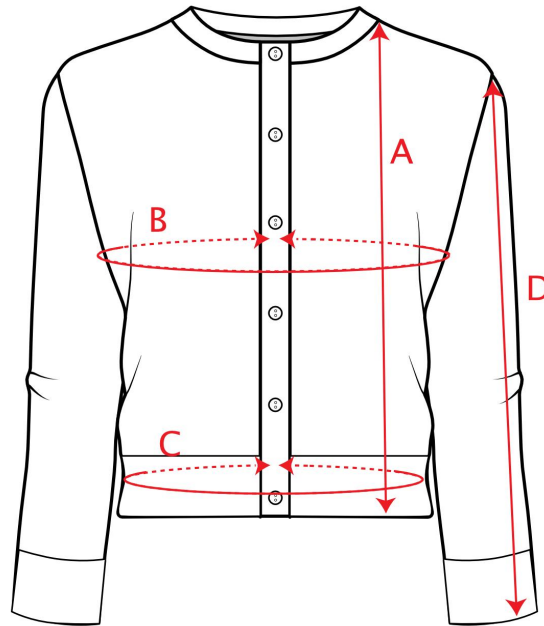


PALAVA

VERA FULL LENGTH SLEEVE - SIZE CHART



These are the actual measurements of our Vera cardigan. Of course she is nice and stretchy as she is a knitted top, so there is some give in the chest area depending on how snug a fit you like.

SIZE			LENGTH (A)		CHEST (B)		WAIST (C)		SLEEVE LENGTH (D)	
UK	EURO	US	CM	INCHES	CM	INCHES	CM	INCHES	CM	INCHES
XS (6)	34	2	47	18 1/2	89	35	60	23 1/2	54	21
S (8-10)	36-38	4-6	48	19	90	35 1/2	70	27 1/2	54	21
M (12-14)	40-42	8-10	49.5	19 1/2	98	38 1/2	78	30 1/2	55	22
L (16-18)	44-46	12-14	51.5	20 1/2	108	42 1/2	88	34 1/2	57	22 1/2
XL (20-22)	48-50	16-18	52.5	20 1/2	118	46 1/2	96	38	59.5	23 1/2
2XL (24-26)	52-54	20-22	53.5	21	128	50 1/2	104	41	59.5	23 1/2

Still not sure which size to go for? We're always happy to offer fitting advice. Drop us an email at hello@palava.co or give us a call on +44 (0)207 052 3888.